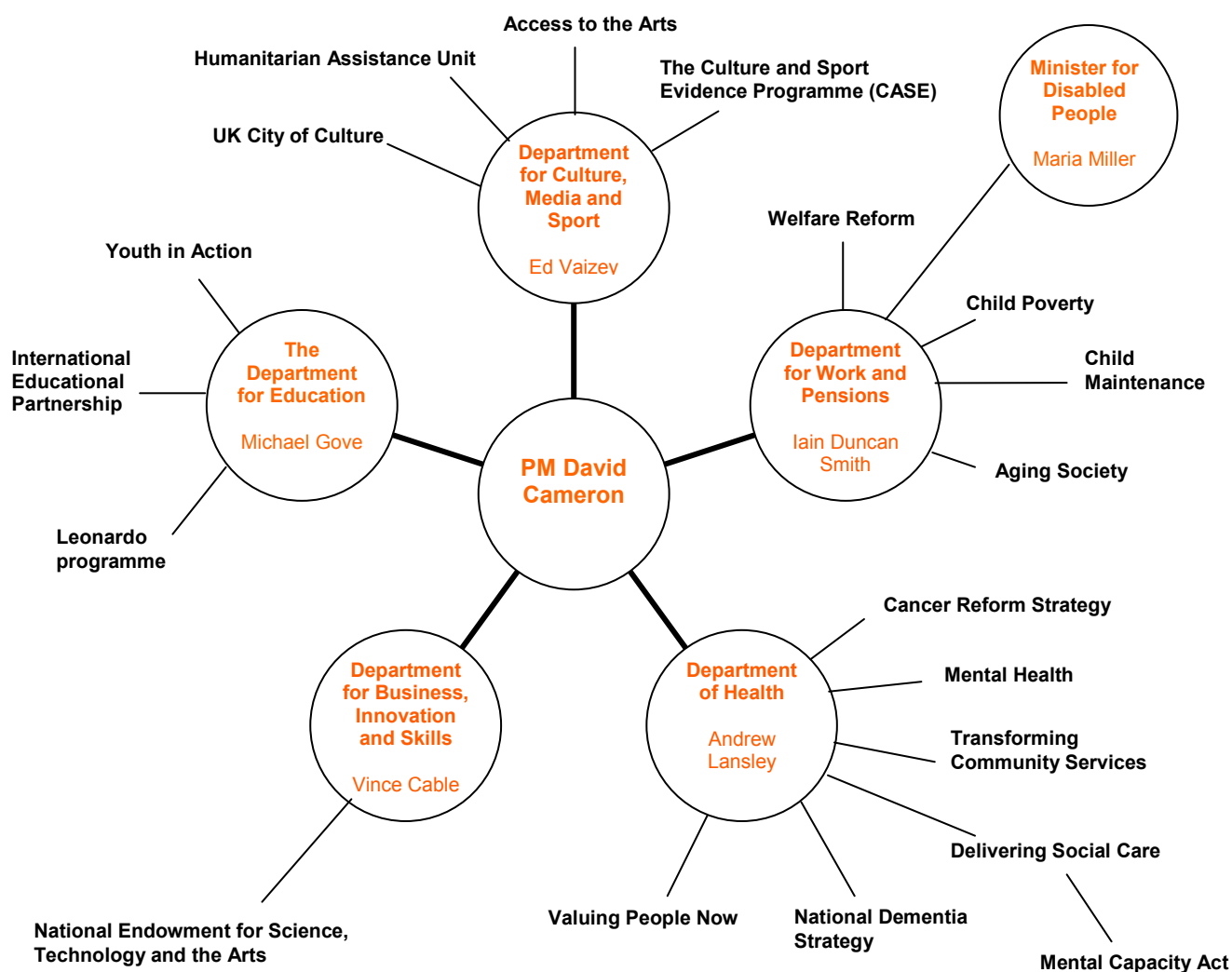


Account No. 16

Recent UK Government Policy Documents

The map below shows UK Government Departments that are of relevance to Music, Music Therapy, Health and Social care. It by no means provides a comprehensive list of all UK Government Departments.

We have provided the names of the current Department Ministers (November 2010) and some examples of current policies (all of which are included in the Accounts). This map serves only as a guide to the logistics of relevant UK Government Departments.





While not always directly relevant to music therapy and music & health practitioners, policy documents provide a framework and background (and at times foreground) for strategic information that impacts on evidence, evaluations, research methodologies, employment and funding strategies across all sectors. The policy documents listed below are also included in Accounts 1-15.

Account 1: Autistic Spectrum Disorders

- ASD good practice guidance (Department of Education, August 2010).
www.education.gov.uk/schools/pupilsupport/sen/types/communication/b0012207/autistic-spectrum-disorders-asds-good-practice-guidance/
- 'Fulfilling and rewarding lives': The strategy for adults with autism in England (Department of Health, March 2010).
www.dh.gov.uk/en/Publicationsandstatistics/Publications/PublicationsPolicyAndGuidance/DH_113369
- Services for adults with autistic spectrum conditions (ASC): Good practice advice for primary care trust and local authority commissioners (Department of Health, April 2009).
www.dh.gov.uk/en/Publicationsandstatistics/Publications/PublicationsPolicyAndGuidance/DH_097418
- 'A better future': A consultation on a future strategy for adults with autistic spectrum conditions (Department of Health, December 2009).
www.dh.gov.uk/en/Publicationsandstatistics/Publications/PublicationsPolicyAndGuidance/DH_098707

Account 2: Special Educational Needs / Learning Disabilities

- Statements of Special Educational Needs (Department of Education, September 2010). www.education.gov.uk/schools/pupilsupport/sen/parents/a0014701/statements-of-special-educational-needs
- Removing Barriers to Achievement - the Government's strategy for meeting special educational needs (Department of Education, August 2010).
www.education.gov.uk/schools/pupilsupport/sen/guidance/a0013143/removing-barriers-to-achievement-the-governments-strategy-for-meeting-special-educational-needs
- Valuing People Now: Health (Department of Health, 2010)
www.dh.gov.uk/en/SocialCare/Learningdisabilities/Valuingpeoplenow/DH_119007





Account 3: Children and Education

- Youth in Action (Department of Education, 2010)
www.education.gov.uk/aboutdfe/policiesandprocedures/strategyandprogrammes/a005888/global-learning-strategy-and-programmes-youth-in-action
- International Partnerships and links (Department of Education, 2010)
www.education.gov.uk/aboutdfe/policiesandprocedures/strategyandprogrammes/a005884/international-educational-partnerships-and-links-programme

Account 4: Children and Families

- Keep Warm, Keep Well: a guide for families (Department of Health, September 2010)
www.dh.gov.uk/en/Publicationsandstatistics/Publications/PublicationsPolicyAndGuidance/DH_105387
- The Family Nurse Partnership Programme (Department of Health, 2010)
www.dh.gov.uk/en/Publicationsandstatistics/Publications/PublicationsPolicyAndGuidance/DH_118530

Account 5: Emotional and Behavioural Difficulties

- Behaviour, Emotional and Social Development Needs (BESD) (Department of Education, August 2010).
www.education.gov.uk/schools/pupilsupport/sen/types/besneeds/a0013044/behaviour-emotional-and-social-development-needs-besd
- Children and Young People in Mind: the final report of the National CAMHS Review (Department of Health, November 2008).
www.dh.gov.uk/en/Publicationsandstatistics/Publications/PublicationsPolicyAndGuidance/DH_090399

Account 6: Trauma and Abuse

- Establishment of regional networks of trauma care (Department of Health, September 2010).
www.dh.gov.uk/en/Publicationsandstatistics/Lettersandcirculars/Dearcolleagueletters/DH_119424
- Working Together to Safeguard Children (Department of Health, 2010)
publications.education.gov.uk/default.aspx?PageFunction=productdetails&PageMode=publications&ProductId=DCSF-00305-2010&
- Together we can end violence against Women and Girls (Department of Health, 2010)
www.dh.gov.uk/en/PublicHealth/ViolenceagainstWomenandChildren/Resources/index.htm
- Improving safety, reducing harm: children, young people and domestic violence. A practical toolkit for front-line professionals (Department of Health, November 2009)





- www.dh.gov.uk/en/Publicationsandstatistics/Publications/PublicationsPolicyAndGuidance/DH_108697
- Planning for the psychosocial and mental health care of people affected by major incidents and disasters: Interim national strategic guidance (Department of Health, July 2009)
www.dh.gov.uk/en/Publicationsandstatistics/Publications/PublicationsPolicyAndGuidance/DH_103562

Account 7: Addictions and Eating Disorders

- Guidance on the consumption of alcohol by children and young people. A report by the Chief Medical Officer (Department of Health, December 2009).
www.dh.gov.uk/en/Publicationsandstatistics/Publications/PublicationsPolicyAndGuidance/DH_110258

Account 8: Mental Health

- Children and Adult Mental Health Services (CAMHS) (Department of Health, 2010)
www.dh.gov.uk/en/Healthcare/Mentalhealth/CAMHS/index.htm
- Improving Access to Psychological Therapies (Department of Health, 2010)
www.dh.gov.uk/en/Healthcare/Mentalhealth/Psychologicaltherapies/index.htm
- Evidence of inequality in access to and provision of mental health services (Department of Health, 2010)
www.dh.gov.uk/en/Healthcare/Mentalhealth/Equalities/index.htm
- New Horizons: a shared vision for mental health (Department of Health, 2009)
www.dh.gov.uk/en/Publicationsandstatistics/Publications/PublicationsPolicyAndGuidance/DH_109705
- Mental Health Act 2007 (Department of Health)
http://webarchive.nationalarchives.gov.uk/+/www.dh.gov.uk/en/Healthcare/Mentalhealth/DH_089882
- Mental Health Act 1983 (Department of Health)
www.dh.gov.uk/en/Healthcare/Mentalhealth/InformationontheMentalHealthAct/DH_4001816

Account 9: Neuro-disability and Rehabilitation

- Department of Health response to the MND Association's correspondence campaign for a national strategy for motor neurone disease (Department of Health, October 2010). www.dh.gov.uk/en/FAQ/Responses/DH_120623
- Response to the formation of the All Part Parliamentary \group for Huntingdon's Disease (Department of Health , June 2010).
www.dh.gov.uk/en/Publicationsandstatistics/Publications/PublicationsPolicyAndGuidance/DH_093975





- Getting the best from neurological services: A guide for people affected by conditions of the brain, spine and nervous system (Department of Health, January 2009)
www.dh.gov.uk/en/Publicationsandstatistics/Publications/PublicationsPolicyAndGuidance/DH_093975
- The National Service Framework for Long Term Neurological Conditions national support for local implementation (Department of Health, May 2008).
www.dh.gov.uk/en/Publicationsandstatistics/Publications/PublicationsPolicyAndGuidance/DH_084579

Account 10: Cancer Care

- Cancer Reform Strategy (Department of Health, December 2007)
<http://webarchive.nationalarchives.gov.uk/+www.dh.gov.uk/en/Healthcare/Cancer/ReformStrategy/index.htm>

Account 11: Elderly and Dementia Care

- Aging Well (Department for Work and Pensions, 2010),
www.dwp.gov.uk/policy/ageing-society/ageing-well/
- Products, tools and aging society (Department for Work and Pensions, 2010),
www.dwp.gov.uk/policy/ageing-society/products-tools-goodpractice/
- Full of Life (Department for Work and Pensions, 2010), www.dwp.gov.uk/policy/ageing-society/full-of-life/
- National Dementia Strategy (Department of Health 2010),
www.dh.gov.uk/en/SocialCare/NationalDementiaStrategy/index.htm
- Services for people who are elderly addressing the balance the multi-disciplinary assessment of elderly people and the delivery of high quality continuing care (Department of Health, 2010),
www.dh.gov.uk/en/Publicationsandstatistics/Publications/PublicationsPolicyAndGuidance/DH_4008917
- Living Well with Dementia: A National Dementia Strategy (Department of Health, February 2009),
www.dh.gov.uk/en/Publicationsandstatistics/Publications/PublicationsPolicyAndGuidance/DH_094058
- Health, Work and Wellbeing (Department for Work and Pensions),
www.dwp.gov.uk/policy/welfare-reform/health-work-and-well-being/

Account 12: Palliative and Bereavement Care

- Palliative Care Funding Review (Department of Health, July 2010)
www.dh.gov.uk/en/MediaCentre/Statements/DH_119507





- Help is at Hand: a resource for people bereaved by suicide and other sudden, traumatic death (Department of Health, April 2010)
www.dh.gov.uk/en/Publicationsandstatistics/Publications/PublicationsPolicyAndGuidance/DH_115629
- Palliative Care Statistics for Children and Young People (Department of Health, 2007)
www.dh.gov.uk/en/Publicationsandstatistics/Publications/PublicationsStatistics/DH_074701
- When a patient dies: Advice on improving bereavement services in the NHS (Department of Health, 2005)
www.dh.gov.uk/en/Publicationsandstatistics/Publications/PublicationsPolicyAndGuidance/DH_4122191

Account 13: Music Therapy and Technology

- National Endowment for Science, Technology and the Arts (Department for Business Innovation and Skills, 2010)
www.bis.gov.uk/policies/innovation/nesta

Account 14: Music, Arts, Health and Society

- UK City of Culture (Department for Culture, Media and Sport, 2010)
www.culture.gov.uk/what_we_do/communities_and_local_government/6015.aspx

Account 15: Research Ethics

- Research governance framework for health and social care (Department of Health, August 2010)
www.dh.gov.uk/en/Aboutus/Researchanddevelopment/AtoZ/Researchgovernance/DH_4002112
- Guidance on nominating a consultee for research involving adults who lack capacity to consent (Department of Health, February 2008)
www.dh.gov.uk/en/Publicationsandstatistics/Publications/PublicationsPolicyAndGuidance/DH_083131
- Report from the Planning Group on Ethics Review in Social Care Research (Department of Health, December 2007)
www.dh.gov.uk/en/Publicationsandstatistics/Publications/PublicationsPolicyAndGuidance/DH_081429
- The Mental Capacity Act 2005 (Department of Health)
www.dh.gov.uk/en/SocialCare/Deliveringadultsocialcare/MentalCapacity/MentalCapacityAct2005/index.htm

The Evidence Bank is updated regularly and contributions are welcome. Additional research papers, journals, websites or documents that fulfil the inclusion / exclusion criteria can be added by contacting: research@nordoff-robbins.org.uk





Are there any copyright considerations?

The Evidence Bank is an open resource for music therapy, and music and health practitioners, researchers, students, as well as funders and employers of these practices. However, the Evidence Bank is a copyright-protected publication.



Creative Commons Attribution Non-Commercial No Derivatives 3.0 Unported

Copyright © Nordoff Robbins 2010

All Rights Reserved. No part of this document may be reproduced without written consent from the Nordoff Robbins Research Department.

Nordoff Robbins Research Department
2 Lissenden Gardens, NW5 1PQ, London, United Kingdom

Tel: +44 (0)20 7267 4496

Email: research@nordoff-robbins.org.uk

Web: www.nordoff-robbins.org.uk

